

FOR SALE

RESIDENTIAL DEVELOPMENT

**Land on North-East Side of Hinckley Road
Leicester Forest East
Leicester
LE3 3PG**

- **Site area: (0.42 acres)**
- **Level site**
- **P/P for 6 x 4 bedroom dwellings**
- **Approx. 1,500 sq ft each with car parking**



PRICE: £650,000+ VAT

Location:

The site occupies a prominent position on the north east side of the main A47 Hinckley Road, on the corner of Forest Rise and adjacent to the Travel Lodge Motel.

Description:

The site is a level rectangular site of approximately 0.42 acres which originally formed part of the adjoining Red Cow public house's car park. The site benefits from planning permission for 6 x 4 bedroom houses each totalling approximately 1,500 sq ft with allocated car parking.



Planning:

The site has planning permission for 6 x 4 bedroom dwellings of approximately 1,500 sq ft each with car parking. Application 14/0056/1/PX was approved and is available for inspection with the floor plans / drawings via an arranged appointment through our office.

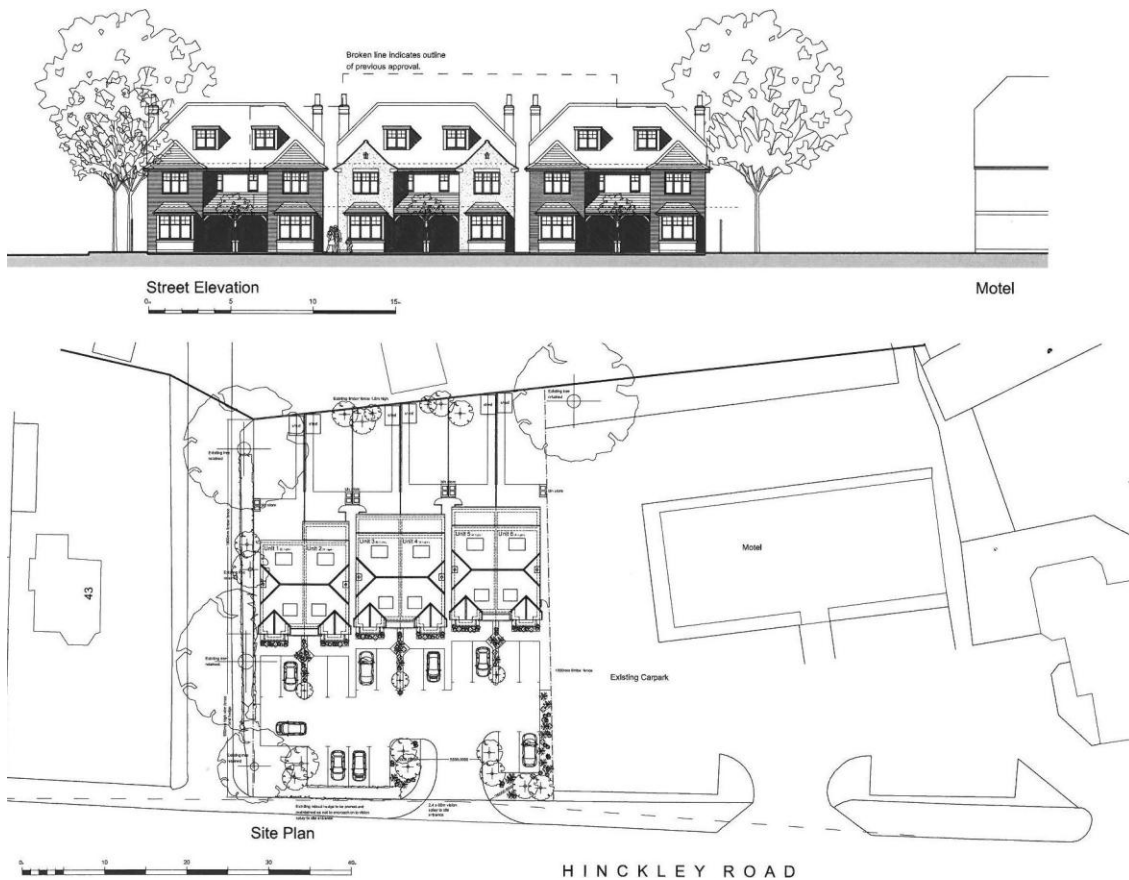
All further enquiries should be made to Blaby District Council Planning Department on (0116) 2727705.

Tenure:

We understand that the site is a freehold.

VAT:

We understand VAT is applicable on the purchase price.



Important Information:

All statements contained in these particulars are provided in good faith and are believed to be correct but their accuracy is not guaranteed. These particulars do not constitute any part of any offer or contract. None of the statements contained herein are, or are intended to be statements or representations of fact or opinion by either the vendor or Shonki Brothers Ltd or its employees or agents.

Neither Shonki Brothers Ltd nor its employees or agents are authorised to make or give any representation, guarantees or warranties whatsoever in relation to the above premises. Interested parties must satisfy themselves by inspection or survey on any matter or statement contained in these particulars.

The premises detailed in these particulars are offered subject to them not having been let, sold or withdrawn and Shonki Brothers Ltd will accept no liability for consequential loss arising from these particulars or any negotiations in relation thereto.

Health & Safety:

You are asked to exercise all care and diligence during your inspection of the property and the Agents are unable to warrant that the property is free of hazards or complies with Health and Safety legislation. The Agents accept no liability for injury or loss to persons or property when visiting.